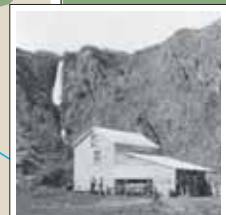
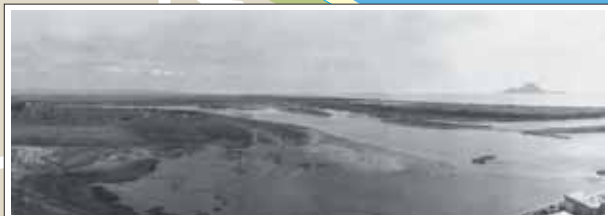
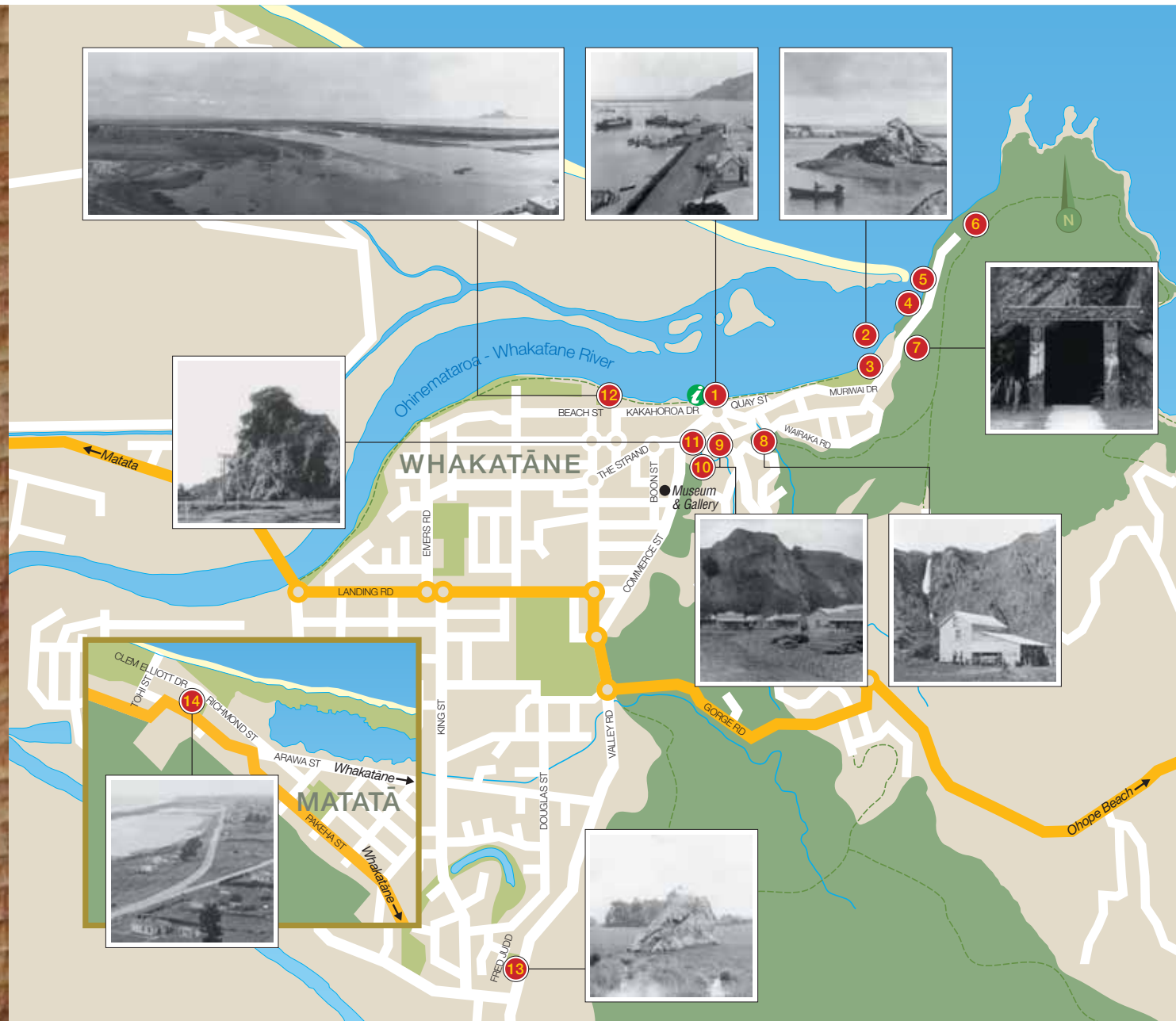


[Ngā Tapuwae o Toi]
Whakatāne Heritage Trail



MAP REFERENCE

- 1 Ōtuawhaki - Visitor Information Centre
- 2 Te Toka o Irākewa - Irākewa's Rock
- 3 The Mataatua Waka Replica
- 4 Mataatua Canoe Memorial
- 5 Statue of Wairaka
- 6 Kohi Point - Whakatāne Heads
- 7 Te Ana o Muriwai - Muriwai's Cave
- 8 Te Wairere - Wairere Waterfall
- 9 Puketapu - Lookout
- 10 Te Pāpaka - Lookout
- 11 Pōhaturoa - Historic Rock
- 12 He Mātāpuna Paru - The Paru Source
- 13 Te Toka-a-Houmea - Te Tahī's Rock
- 14 Te Kaokaoroa - Historic Reserve

- State Highway 30
- Scenic Bush Reserves
- Parks and Reserves
- Walking Tracks
- Streams

Acknowledgements:
Photographs (partial images) courtesy of the Whakatāne Museum & Gallery



Bronze tiles designed by Maxine Bluett

